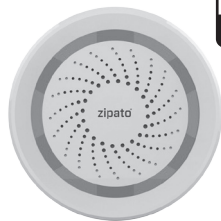


zipato® INDOOR SIREN

quick-start guide v1.3



INTRODUCTION

The indoor siren is an intelligent device that can be controlled remotely by radio frequency. Siren sends messages via Z-Wave network to the Z-Wave main controller. The siren can both send and receive messages. When the siren code button is pressed, it will send a message to the Z-Wave main controller which can be used to include or test the device. When the siren receives messages from the Z-Wave main controller, the siren alarm will be triggered. The indoor siren is battery powered, small and easily installed. When the siren is working, LED light will flash, and there will be an alarm sound at the same time. The sound level is at least 100 dB.

PACKAGE CONTENT

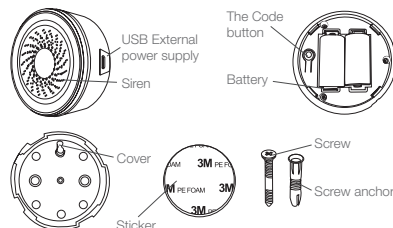
Siren	1pc
Battery	2pcs
Screw	1pc
Screw anchor	1pc
Double-sided adhesive	1pc
Instruction manual	1pc

SPECIFICATIONS

- **Radio Protocol**
Z-Wave
- **Power supply**
CR123A x 2
- **Stand-by time**
1 year
- **External power supply**
Mini USB, allowed voltage level 5V 1-2A (voltage should be at 5V, higher voltage may burn the equipment, if less than 5V, the device will report low current)
- **Compatible**
with 300 series and 500 series
- **Temperature range**
Operation: 0°C to +40°C
Storage: 0°C to +60°C
- **Radio Frequency**
868.4 MHz EU; 908.4 MHz US
- **Max transmitting power**
4 dBm
- **Range**

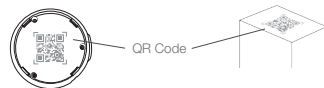
- up to 70m outdoor and up to 50m indoor
- **Sound intensity**
115 dB
- **Operation temperature**
0° - 40°C
- **Storage temperature**
0° - 60°C
- **Dimensions**
68 x 68 x 33 mm

PRODUCT CONFIGURATION



SMARTSTART SECTION

This device supports SmartStart. The QR code can be found on the bottom of the siren and on top of the packaging.



TECHNICAL INFORMATION

- When the siren is triggered, it will make alarm sound and LED light will flash at the same time.
- When some other sensor is triggered, the siren alarm can associate with that sensor through the Z-Wave network.
- The siren can be controlled remotely via mobile phone app.
- Compatible with any Z-Wave controller.

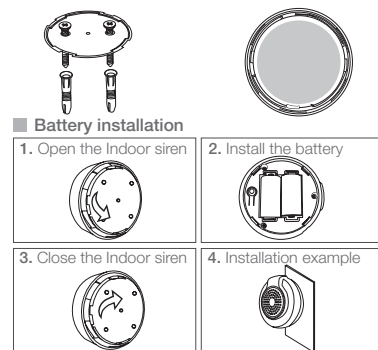
INSTALLATION STEPS

⊕ Hardware installation

■ Cover installation

Option One
Fix the indoor siren with screws

Option Two
Fix the indoor siren with sticker



SAFETY INSTRUCTIONS

IMPORTANT SAFETY INSTRUCTIONS

- Please follow these instructions.
- Heed all warnings.
- Do not use this product near water or expose the product to dripping or splashing of any water or liquid.
- Clean only with a dry cloth.
- Do not install near any heat sources such as radiators, heat registers, stoves or other apparatus (including amplifiers) that produce heat.
- Only use attachments and accessories specified by the manufacturer.
- Avoid installing the device near metal or inside sources of radio, or electromagnetic interference.

WARNING: No user-serviceable parts inside.

Refer all servicing to qualified service personnel.

IMPORTANT CONSUMER INFORMATION:

Please read before activating or using the device.

LOUD NOISE HAZARD

Note The alarm sounds are very loud and can damage your hearing. During acoustic alarm, please keep sufficient distance to the siren and protect your hearing.

INTERFERENCE/HIGH FREQUENCY EXPOSITION/MEDICAL EQUIPMENT/PACEMAKERS

External sources, either within or outside the hospital environment, may interfere with the appropriate function of pacemakers which are being implanted all around the world in current medical practice. The patient and the physician who is responsible for followup of the pacing systems may be confronted with some specific problems regarding the various types of electromagnetic interference (EMI). To avoid these unwanted EMI effects one must be aware of this potential problem and need to take some precautions to CONSULT WITH YOUR DOCTOR, OR OTHER QUALIFIED HEALTH CARE PROFESSIONAL.

TIPS

- When installing the Indoor siren, please avoid noisy places.
- Do not install near a ventilated position as it can affect the siren.
- Do not install near a wet place to avoid possible damage to the siren
- Association allows for direct communication between Z-Wave network devices. The main controller does not take part in such communication. Using this mechanism, the Indoor siren may communicate with other devices even when the main controller is damaged.

INCLUDING SIREN TO Z-WAVE NETWORK

The indoor siren can be included to the Z-Wave network by pressing the code button.

- 1) Disassemble the siren and insert the battery into the siren. Make sure the device is located within the direct range of the controller.
 - 2) Set the controller into the inclusion mode (see main controller's operating manual).
 - 3) Quickly triple click the code button, LED light will flash red for 5 times.
 - 4) The Indoor siren will be detected and included in the Z-Wave network.
 - 5) Wait for the main controller to configure the siren.
- EXCLUDING SIREN FROM Z-WAVE NETWORK**
- 1) Make sure the siren is connected to power source.
 - 2) Set the main controller into the exclusion mode (see main controller's operating manual).

- 3) Quickly triple click the code button, LED light will flash red for 5 times
 - 4) Wait for the main controller to remove the sensor.
- LED LIGHT STATUS**
- 1) When the Indoor siren is triggered, LED light flashes red for 12 seconds.
 - 2) When siren battery is installed, LED light flashes red for 3 seconds.
 - 3) Add the siren to the Z-Wave network or remove the siren from Z-Wave network, LED light flashes red for 5 times.
 - 4) Press the code button for 10 seconds and siren will be restored to factory default settings. LED light flashes red for 3 seconds.
 - 5) In normal conditions LED light is in off state.

RESTORE THE SIREN TO FACTORY DEFAULT SETTINGS

Reset procedure will remove all information on the Z-Wave network or Z-Wave controller, and restore the sensor to factory default settings.

- 1) Remove the sensor's cover
- 2) Make sure the sensor is connected to power source
- 3) Press the code button for 10 seconds, LED will flash blue for 3 seconds
- 4) Release the code button

Note When the siren is being restored to factory settings, please make sure power source is connected. Please use this procedure only when the network primary controller is missing or otherwise inoperable.

BATTERY USAGE TIPS

Battery life of the siren is approximately one year at factory default settings. The current battery level is displayed in the Z-Wave main controller. Red battery icon means the battery needs replacement.

Note The Indoor siren is battery powered. Using batteries other than specified may result in an explosion. Dispose of properly, please observe environmental protection rules.

External power usage hints

External power interface is Mini USB socket adapter with 6V, 0.5A specification. If the voltage is in the 4.5 - 6V range the device will work but may report low power.

ASSOCIATIONS

This has the effect that when the sensor is triggered, all devices associated with the sensor will receive the relevant reports. Through an association, the sensor may control another Z-Wave network device, e.g. the alarm device, wall plug, PIR, etc. This Sensor supports two association groups.

Association group 1 reports relay's status to just one device, Z-Wave network's main controller by default. It's not recommended to modify settings of this association group.

Association group 2 is assigned to the siren status - ON/OFF. Allows for sending a controlled command to the associated device whenever the Indoor siren is turned ON (or OFF).

Note Association allows for direct communication between Z-Wave network devices. The main controller does not take part in such communication.

ADVANCED CONFIGURATION

1. Configure alarm volume

This parameter defines the output volume when siren plays alarm. Doorbell alarm volume has three settings, Low (Parameter is set to '1'), Middle (Parameter is set to '2'), High (Parameter is set to '3'). The default value is '2'.

Parameter Number	Size	Available Settings	Default
1	1	1 - 3	2

2. Configure alarm duration time

This Parameter defines the alarm duration time when siren receives an alarm sensor notification report or an alarm command from controller. Siren duration time has three settings: 30 seconds (Parameter is set to '1'), 1 minute (Parameter is set to '2'), 5 minute (Parameter is set to '3'). The default value is '2'.

Parameter Number	Size	Available Settings	Default
2	1	0 - 3	2

3. Configuring doorbell music duration time

This parameter defines the doorbell music duration time when siren receives a door/window sensor notification report or an alarm command (BASIC_SET =0x02) from a controller. The doorbell music will be played always if this parameter is set to '0'. The doorbell music will not be played if this parameter is set to '-1'. Other values are the doorbell music playing duration time.

Parameter Number	Size	Available Settings	Default
3	1	0 - 127	1

4. Configure doorbell music volume

This parameter defines the output volume when siren plays doorbell music. Doorbell music volume has three settings: Low (Parameter is set to '1'), Middle (Parameter is set to '2'), High (Parameter is set to '3'). The default value is '2'.

Parameter Number	Size	Available Settings	Default
4	1	1 - 3	2

5. Configure alarm sound index

This parameter defines the alarm sound index so siren can play different sound when an alarm occurs. There are 10 different sounds for user selection.

Parameter Number	Size	Available Settings	Default
5	1	1 - 10	9

6. Configure doorbell music index

This parameter defines the doorbell music index so siren can play different music when an alarm occurs. There are 10 different music compositions for user selection.

Parameter Number	Size	Available Settings	Default
6	1	1 - 10	10

Note The alarm sounds are very loud and can damage your hearing. During acoustic alarm, please keep sufficient distance to the siren and protect your hearing.

Battery check command

Users can also inquire the battery status of the siren by sending BATTERY_GET command. Once the siren receives the command, it will return BATTERY_REPORT command. The siren will send BATTERY_LEVEL=0xFF command to the Z-Wave Controller to inform that the siren is in dead battery status, otherwise BATTERY_LEVEL value range is 0% to 100%.

Command Classes

This Sensor supports Command Classes as Below:

- * COMMAND_CLASS_ZWAVEPLUS_INFO (V2)
- * COMMAND_CLASS_VERSION (V2)
- * COMMAND_CLASS_MANUFACTURER_SPECIFIC (V2)
- * COMMAND_CLASS_DEVICE_RESET_LOCALLY (V1)
- * COMMAND_CLASS_POWERLEVEL (V1)

- * COMMAND_CLASS_BATTERY (V1)
- * COMMAND_CLASS_ASSOCIATION (V2)
- * COMMAND_CLASS_ASSOCIATION_GRP_INFO (V1)
- * COMMAND_CLASS_WAKE_UP (V2)
- * COMMAND_CLASS_SWITCH_BINARY (V1)
- * COMMAND_CLASS_NOTIFICATION (V4)
- * COMMAND_CLASS_CONFIGURATION (V1)

DISCLAIMER

Some content and services accessible through this device belong to third parties and are protected by copyright, patent, trademark and/or other intellectual property laws. Such content and services are provided solely for your personal non-commercial use. You may not use any content or services in a manner that has not been authorised by the content owner or service provider. Without limiting the foregoing, unless expressly authorised by the applicable content owner or service provider, you may not modify, copy, republish, upload, post, transmit, translate, sell, create derivative works, exploit, or distribute in any manner or medium any content or services displayed through this device.

CERTIFICATIONS

DECLARATION OF CONFORMITY

We, Tri plus grupa d.o.o., Croatia, 10000 Zagreb, Banjaviceva 11, declare that the product INDOOR SIREN, Z-Wave, is in compliance with the requirements of the following RED and RoHS standards, and that it satisfies all the technical regulations applicable to the product within the scope of Council Directives 2014/53/EU. EN 60950-1:2006+A11:2009 +A1:2010+A12:2011+A2:2013 Draft ETSI EN 301 489-1 V2.2.0 Final draft ETSI EN 301 489-3 V2.1.1 EN62479:2010 ETSI EN 300 220-1 V3.1.1 Final drafts ETSI EN 300 220-2 V3.2.1 Sebastian Popovic, CEO

FCC WARNING

This device complies with part 15 of the FCC Rules. Operation is subject to the following two conditions: (1) this device may not cause harmful interference, and (2) this device must accept any interference received, including interference that may cause undesired operation. Any changes or modifications not expressly approved by the party responsible for compliance could void the user's authority to operate the equipment.

NOTE: This equipment has been tested and found to comply with the limits for a Class B digital device, pursuant to Part 15 of the FCC Rules. These limits are designed to provide reasonable protection against harmful interference in a residential installation. This equipment generates, uses and can radiate radio frequency energy and, if not installed and used in accordance with the instructions, may cause harmful interference to radio communications.

However, there is no guarantee that interference will not occur in a particular installation. If this equipment does cause harmful interference to radio or television reception, which can be determined by turning the equipment off and on, the user is encouraged to try to correct the interference by one or more of the following measures:

- Reorient or relocate the receiving antenna.
- Increase the separation between the equipment and receiver.
- Connect the equipment into an outlet on a circuit different from that to which the receiver is connected.
- Consult the dealer or an experienced radio/TV

technician for help.

To maintain compliance with FCC's RF Exposure guidelines, this equipment should be installed and operated with minimum distance 20cm between the radiator and your body. Use only the supplied antenna.

FCC ID: 2AAU7-ZMZWUS

Certified in Canada, IC No: 11391A-ZMZWUS

IC Caution:

RSS-Gen Issue 4 December 2014" & "CNR-Gen 4 Décembre 2014:

- English: This device complies with Industry Canada licence-exempt RSS standard(s). Operation is subject to the following two conditions: (1) This device may not cause interference, and (2) This device must accept any interference, including interference that may cause undesired operation of the device.

- French: Le présent appareil est conforme aux CNR d'Industrie Canada applicables aux appareils radio exempts de licence. L'exploitation est autorisée aux deux conditions suivantes:

- (1) l'appareil ne doit pas produire de brouillage, et
- (2) l'utilisateur de l'appareil doit accepter tout brouillage radioélectrique susceptible de compromettre le fonctionnement.

ONE (1) YEAR LIMITED WARRANTY

Tri plus grupa d.o.o. warrants this product (the "Product") against defects in materials and/or workmanship under normal use for a period of ONE (1) YEAR from the date of purchase by the original purchaser ("Warranty Period"). If a defect arises and a valid claim is received within the Warranty Period, then as your sole remedy (and Tri plus grupa' sole liability), Tri plus grupa will at its option either 1) repair the defect at no charge, using new or refurbished replacement parts, or 2) replace the Product with a new product that is functionally equivalent to the original, in each case within 30 days following receipt of the returned Product. A replacement product or part, assumes the remaining warranty of the original Product. When a Product or part is exchanged, any replacement item becomes your property and the replaced Product or part becomes Tri plus grupa' property.

Obtaining Service: To obtain warranty service, visit <https://community.zipato.com> to open a service request. Please be prepared to describe the Product that needs service and the nature of the problem. A purchase receipt is required. The Product must be insured, and shipped freight prepaid and securely packaged. You must contact support for a Return Material Authorization Number ("RMA Number") before shipping any Product, and include the RMA Number, a copy of your purchase receipt and a description of the problem you are experiencing with the Product. Any claim under this Limited Warranty must be submitted to Tri plus grupa before the end of the Warranty Period.

Exclusions: This warranty does not apply to: a) damage caused by failure to follow instructions relating to the Product's use or the installation of components; b) damage caused by accident, abuse, misuse, transport, neglect, fire, floods, earthquake or other external causes; c) damage caused by service performed by anyone who is not an authorized representative of Tri plus grupa; d) accessories used in conjunction with a covered Product; e) a Product or part that has been modified to alter functionality or capability; f) items intended to be periodically replaced by the purchaser during the normal life of the Product, including, without limitation, batteries, bulbs or cables; g) a Product that is used commercially or

for a commercial purpose, in each case as determined by SmartThings.

EXCEPT FOR BODILY INJURY, TRI PLUS GRUPA SHALL NOT BE LIABLE FOR (I) ANY LOST PROFITS, COST OF PROCUREMENT OF SUBSTITUTE PRODUCTS, OR ANY INCIDENTAL OR CONSEQUENTIAL DAMAGES, OR (II) ANY AMOUNTS IN EXCESS OF THE PURCHASE PRICE FOR THE PRODUCT, IN EACH CASE WHETHER RESULTING FROM THE USE OF OR INABILITY TO USE THIS PRODUCT, OR ARISING OUT OF ANY BREACH OF THIS WARRANTY, EVEN IF COMPANY HAS BEEN ADVISED OF THE POSSIBILITY OF SUCH DAMAGES. SOME STATES DO NOT ALLOW THE EXCLUSION OR LIMITATION OF INCIDENTAL OR CONSEQUENTIAL DAMAGES, SO THE ABOVE LIMITATION AND EXCLUSIONS MAY NOT APPLY TO YOU. TO THE EXTENT PERMITTED BY APPLICABLE LAW, TRI PLUS GRUPA DISCLAIMS ANY AND ALL STATUTORY OR IMPLIED WARRANTIES, INCLUDING WITHOUT LIMITATION, WARRANTIES OF MERCHANTABILITY, FITNESS FOR A PARTICULAR PURPOSE AND WARRANTIES AGAINST HIDDEN OR LATENT DEFECTS. IF TRI PLUS GRUPA CANNOT LAWFULLY DISCLAIM STATUTORY OR IMPLIED WARRANTIES, THEN TO THE EXTENT PERMITTED BY LAW, ALL SUCH WARRANTIES SHALL BE LIMITED IN DURATION TO THE WARRANTY PERIOD. SOME STATES DO NOT ALLOW LIMITATIONS ON HOW LONG AN IMPLIED WARRANTY LASTS, SO THE ABOVE LIMITATIONS MAY NOT APPLY TO YOU. This warranty gives you specific legal rights and you may also have other rights, which vary from state to state. To exercise your rights under this warranty, gives you specific legal rights and you may also have other rights, which vary from state to state. To exercise your rights under this warranty, please follow the instructions above under the heading "Obtaining Service", or contact Zipato at Tri plus grupa d.o.o., Banjaviceva 11, 10000 Zagreb, Croatia.

Zipato is a registered trademark of Tri plus grupa d.o.o. Manufacturer / Importer for Croatia:

Tri plus grupa d.o.o.
Banjaviceva 11
10000 Zagreb
Croatia



BATTERY DISPOSAL

Remember that before any type of disposal the batteries should be discharged completely. Tape the contacts with electrical tape and package so as to prevent contacts accidentally coming together at any time. For home disposal, many stores offer free recycling of rechargeable batteries. If no outlet is available in your area, it is safe to dispose of these batteries in your regular trash. As always, check with your local laws to make sure that this is acceptable.

NOTICE

Although Zipato has attempted to ensure the accuracy of the content of this manual, it is possible that this document may contain technical inaccuracies, typographical, or other errors. Zipato assumes no liability for any error in this publication, and for damages, whether direct, indirect, incidental or implied, including, but not limited to implied warranties of merchantability or fitness for a particular purpose. The published information in the manual is subject to change without notice. Zipato reserves the right to make changes in the product design, layout, and driver revisions without notification to its users. This version of the Installation guide supersedes all previous versions.

The siren can be controlled remotely via mobile phone app.